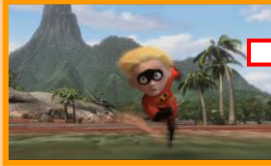


## Alliteration

Use alliteration to help the sounds of words link the sentence together

Writer's tip:  
Use alliteration carefully - too often and it can lose its effect!



Dash **sprinted** **spectacularly** across the land like a **space**-rocket.

His **terrible** **teeth** were like **towers** pointing **to** the sky.



**Peering** **patiently**, the moon hovered above the **planet**.

## Adverbs

Use adverbs in your writing to describe the verbs.

Writer's tip:  
Try using an adverb at the beginning of a sentence - it gets the sentence off to a great start! An adverb usually ends in -ly!

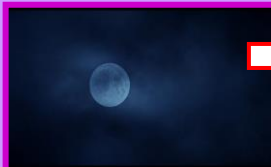


**Energetically**, Dash **sprinted** across the land like a supersonic jet.

verb

adverb

**Staring** **angrily**, his teeth were sharp knives pointing to the sky.

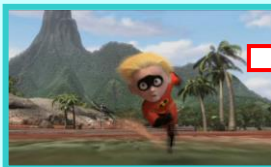


Hovering, the moon is a spaceship **peering** **patiently** down on Earth.

## Verbs

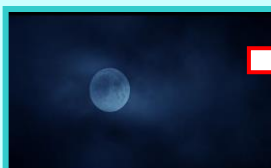
Use verbs to describe the actions of a character or thing.

Writer's tip:  
Try using a thesaurus/synonym circles to find really powerful verbs.



From afar, the volcano **peered** down on Dash as he **sprinted** along.

The tiger **stared** into the distance as he **waited** for his prey.



The moon **glistered** in the night sky.